The background features abstract, overlapping green geometric shapes in various shades of green, creating a modern, layered effect on the right side of the slide.

# Understanding Cloud Native Application Bundles

## **CNAB UNPACKED**

[porter.sh/cnab-unpacked](https://porter.sh/cnab-unpacked)

# INTRODUCTIONS



**Carolyn Van Slyck**

[@carolynvs](#)

Senior Software Engineer  
Microsoft

# WHAT IS CNAB?

Cloud Native Application Bundles is an open-source packaging and distribution specification for managing distributed applications with a single installable file.

# WHERE DID IT COME FROM?



Microsoft Azure



docker

Pivotal®

We had contributions from other companies and the community! ❤️



# WHAT DOES CNAB SOLVE?

The gap between your application's code and everything necessary to deploy your application.

# LET'S DEFINE AN APP

- Terraform to create the infrastructure
- Helm to deploy to a kubernetes cluster
- Obligatory bash script

# LET'S FIND THE GAP

If I gave this to a friend to deploy, would they...

# LET'S FIND THE GAP

If I gave this to a friend to deploy, would they...

- Clone a repository? The app's or a devops one?

# LET'S FIND THE GAP

If I gave this to a friend to deploy, would they...

- Clone a repository? The app's or a devops one?
- Install specific versions of terraform and helm?

# LET'S FIND THE GAP

If I gave this to a friend to deploy, would they...

- Clone a repository? The app's or a devops one?
- Install specific versions of terraform and helm?
- Set environment variables, and save config files to specific locations?

# LET'S FIND THE GAP

If I gave this to a friend to deploy, would they...

- Clone a repository? The app's or a devops one?
- Install specific versions of terraform and helm?
- Set environment variables, and save config files to specific locations?
- Use specific helm and terraform commands?

# LET'S FIND THE GAP

If I gave this to a friend to deploy, would they...

- Clone a repository? The app's or a devops one?
- Install specific versions of terraform and helm?
- Set environment variables, and save config files to specific locations?
- Use specific helm and terraform commands?
- Use a utility docker container that required them to mount volumes from the local host and pass through environment variables?



# LET'S FIND THE GAP

If I gave this to a friend to deploy, would they...

- Clone a repository? The app's or a devops one?
- Install specific versions of terraform and helm?
- Set environment variables, and save config files to specific locations?
- Use specific helm and terraform commands?
- Use a utility docker container that required them to mount volumes from the local host and pass through environment variables?
- Guess all of this correctly... the first time? 😅

# LET'S FIND THE GAP

If I gave this to a friend to deploy, would they...

- Clone a repository? The app's or a devops one?
- Install specific versions of terraform and helm?
- Set environment variables, and save config files to specific locations?
- Use specific helm and terraform commands?
- Use a utility docker container that required them to mount volumes from the local host and pass through environment variables?
- Guess all of this correctly... the first time? 😅
- How about at 2am while on-call for an app they didn't write? 🤖

# LET'S FIND THE GAP

If I gave this to a friend to deploy, would they...

- Clone a repository? The app's or a devops one?
- Install specific versions of terraform and helm?
- Set environment variables, and save config files to specific locations?
- Use specific helm and terraform commands?
- Use a utility docker container that required them to mount volumes from the local host and pass through environment variables?
- Guess all of this correctly... the first time? 😅
- How about at 2am while on-call for an app they didn't write? 🤖
- Still be your friend? 🤔

**LET'S TRY THIS WITH A BUNDLE**

# GET READY...

```
$ porter explain --tag deislabs/tron:v1.0
```

name: Tron

description: The classic game of light cycles and disc wars

version: 1.0.0

## Credentials

Name	Type	Description
kubeconfig	string	Path to kubeconfig

## Parameters

Name	Type	Description	Default (Required)
sparkles	boolean	Moar ✨	false

 <https://github.com/deislabs/porter/issues/635>

# GET SET...

```
$ porter credentials generate -t deislabs/tron:v1.0
```

```
Generating new credential azure from bundle tron
```

```
==> 1 credentials required for bundle tron
```

```
? How would you like to set credential "kubeconfig" file path
```

```
? Enter the path that will be used to set credential "kubeconfig"
```

```
Saving credential to /Users/carolynvs/.porter/credentials/azure.yaml
```

# GO!

```
$ porter install tron -t deislabs/tron:v1.0 --creds azure --param sparkles=true
```

# LET'S REFLECT



# LET'S REFLECT

- Self describing, so it can tell you what you need to install it



# LET'S REFLECT

- Self describing, so it can tell you what you need to install it
- Installed with a single command

# LET'S REFLECT

- Self describing, so it can tell you what you need to install it
- Installed with a single command
- Underlying toolsets and logic were abstracted in the bundle

# LET'S REFLECT

- Self describing, so it can tell you what you need to install it
- Installed with a single command
- Underlying toolsets and logic were abstracted in the bundle
- Distributed via OCI (Docker) registry

# LET'S REFLECT

- Self describing, so it can tell you what you need to install it
- Installed with a single command
- Underlying toolsets and logic were abstracted in the bundle
- Distributed via OCI (Docker) registry
- You are still friends 😎

# WHAT WAS IN THE BUNDLE?

The application **and everything needed to install it**

- Helm and terraform CLIs
- Helm chart
- Terraform files
- Bash script that orchestrates installing everything

**AWKWARD QUESTION TIME!**

# AWKWARD QUESTION TIME!



Does this replace < my favorite tech >?

# AWKWARD QUESTION TIME!



Does this replace < my favorite tech >?



Why wouldn't I just use < my favorite tech >?



# AWKWARD QUESTION TIME!



Does this replace < my favorite tech >?



Why wouldn't I just use < my favorite tech >?

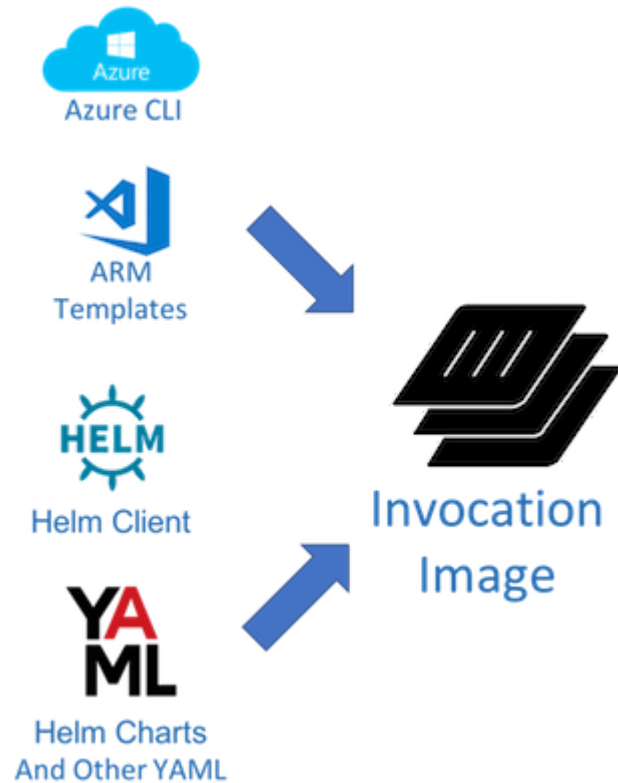


I don't like the sound of that bash script...

**WHEN WOULD YOU USE A BUNDLE?**

# INCLUDE REQUIRED TOOLS

Distribute files in the CNAB invocation image



# DEPLOY APP'S INFRASTRUCTURE

Custom script for the invocation image entrypoint



Google Cloud

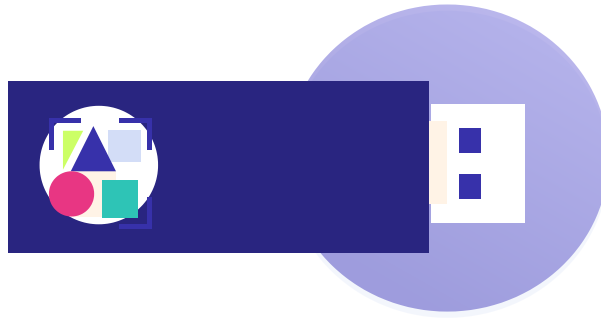


Terraform



# AIRGAPPED NETWORKS OR OFFLINE

Thick bundles include referenced images



# MANAGE MULTIPLE TECH STACKS

Consistent interface regardless horrors inside



# IMMUTABLE, VERIFIED INSTALLER

Signed bundles referencing image digests



```
-----  
SdILZkhEscXa5QD4UtEbTbI  
MEz2BcCjLr0P8pzQiGvAUzV  
MMRR7N8DiJrODuHcrs=  
--- END PGP ---
```



# CNAB SUB SPECIFICATIONS

Core

Registries 

Security 

Dependencies 

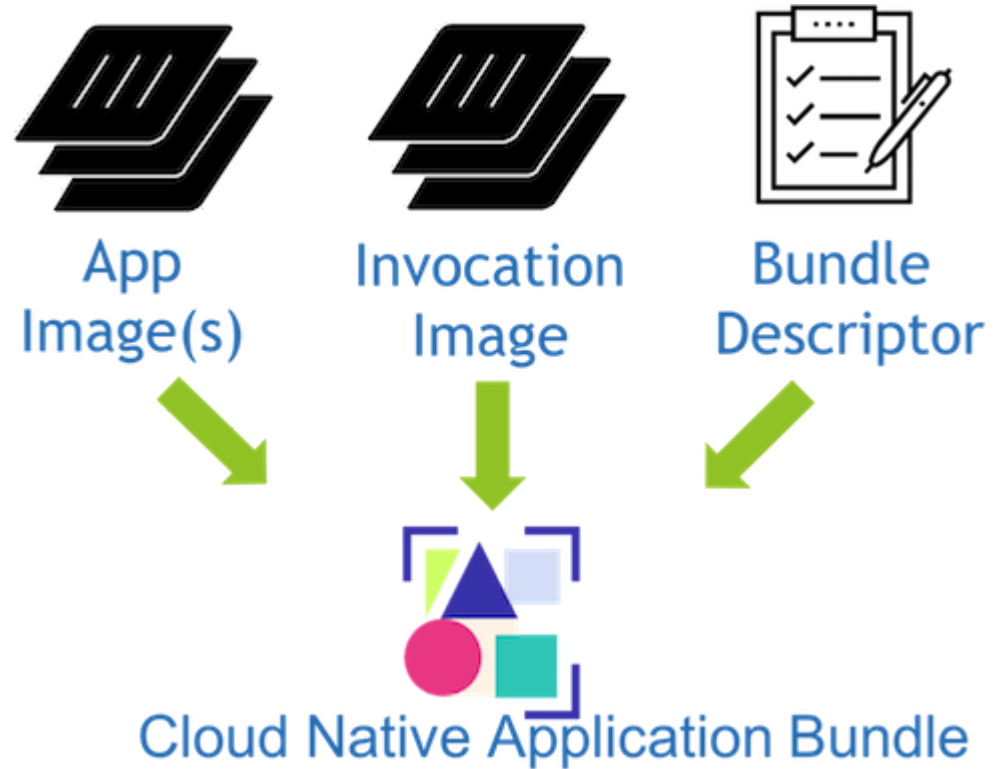


# CORE SPECIFICATION

- Bundle file format (bundle.json)
- Invocation image format, aka "the installer"
- Entrypoint in invocation images
- Bundle format (thin or thick)
- Bundle runtime execution behavior
- Well-known Actions
  - Install
  - Upgrade
  - Uninstall
- Custom Actions

**Version 1.0 was released this month!** 🎉

# ANATOMY OF A BUNDLE



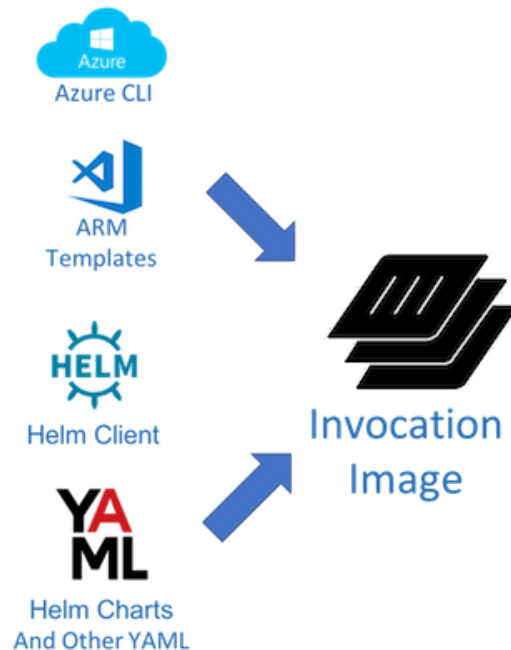
# APPLICATION IMAGES

- The same same docker images you use now
- Continue to build and distribute them without change
- CNAB doesn't affect this

# THE INVOCATION IMAGE

## The Installer or MSI for the Cloud

- Includes all the tools you need to install your app
- Has your configuration, metadata, templates, etc
- Run script with your logic for install, upgrade and uninstall

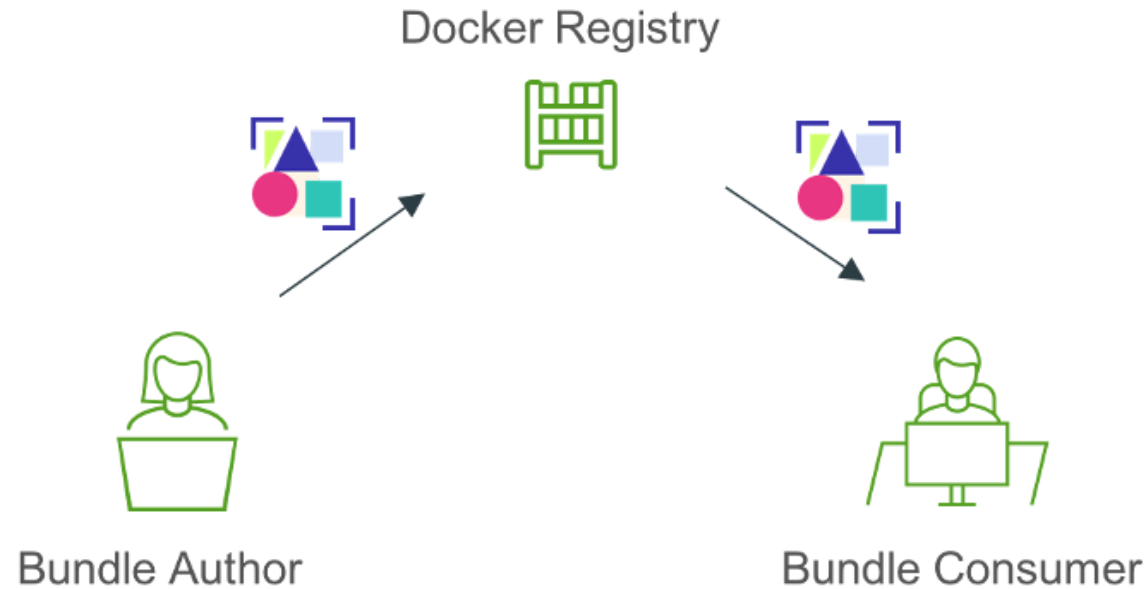


# THE BUNDLE DESCRIPTOR

- **bundle.json**
- Invocation and Application images with their content digests
- Credentials and Parameters accepted by the installer
- Outputs generated by the installer

# REGISTRIES SPECIFICATION

Push and pull bundles to OCI registries



# SECURITY SPECIFICATION

- Image digests
- Signing bundles
- Bundle attestation

# DEPENDENCIES SPECIFICATION

🚧 Very early stage

- Require other bundles
- Specify their version
- Use their outputs



# CNAB TOOLING

- Porter
- Docker App
- Duffle

Anyone can write their own too! These are all based on:

<https://github.com/deislabs/cnab-go>

# CNAB TOOLING

- Porter
- Docker App
- Duffle

Anyone can write their own too! These are all based on:

<https://github.com/deislabs/cnab-go>



Are all CNAB tools interchangeable?

# PORTER

The friendly cloud installer that bootstraps your bundles using tools and assets from your current pipeline. ✨

- Doesn't require knowledge of CNAB
- Uses mixins to include tools into bundles
- Designed to make bundles easier to manage
- Community focused



# DEMO

Deploy a bundle with Porter

<https://github.com/jeremyrickard/do-porter>

# PARTING AWKWARD QUESTIONS

The background of the slide features abstract, overlapping geometric shapes in various shades of green, ranging from light lime to dark forest green. These shapes are primarily located on the right side and bottom of the frame, creating a modern, layered effect against the white background.

# PARTING AWKWARD QUESTIONS



Is Porter a Microsoft-only tool?

# PARTING AWKWARD QUESTIONS



Is Porter a Microsoft-only tool?



Are bundles ready to use?

# PARTING AWKWARD QUESTIONS



Is Porter a Microsoft-only tool?



Are bundles ready to use?



This is more of a comment really...



# PARTING AWKWARD QUESTIONS



Is Porter a Microsoft-only tool?



Are bundles ready to use?



This is more of a comment really...



Ask me yours!

# RESOURCES

- [cnab.io](https://cnab.io)
- [cnab.io/community-meetings/#communications](https://cnab.io/community-meetings/#communications) - #cnab CNCF Slack
- [porter.sh](https://porter.sh)
- [porter.sh/contribute](https://porter.sh/contribute) - New Contributor Guide
- [porter.sh/community](https://porter.sh/community) - #porter CNCF Slack and Office Hours